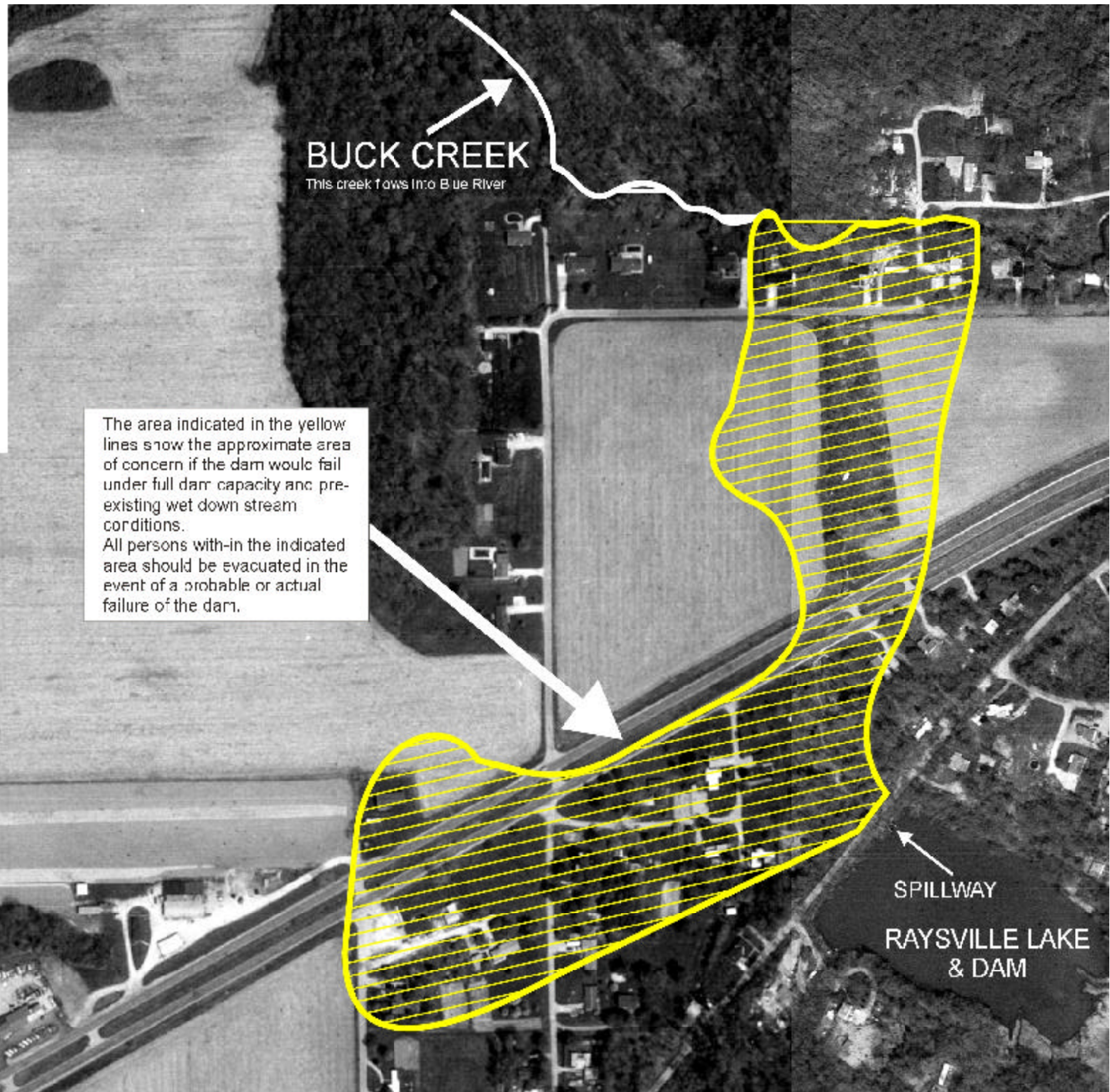


**TAB B**



**BUCK CREEK**  
This creek flows into Blue River

The area indicated in the yellow lines show the approximate area of concern if the dam would fail under full dam capacity and pre-existing wet down stream conditions. All persons with-in the indicated area should be evacuated in the event of a probable or actual failure of the dam.

SPILLWAY  
RAYSVILLE LAKE & DAM